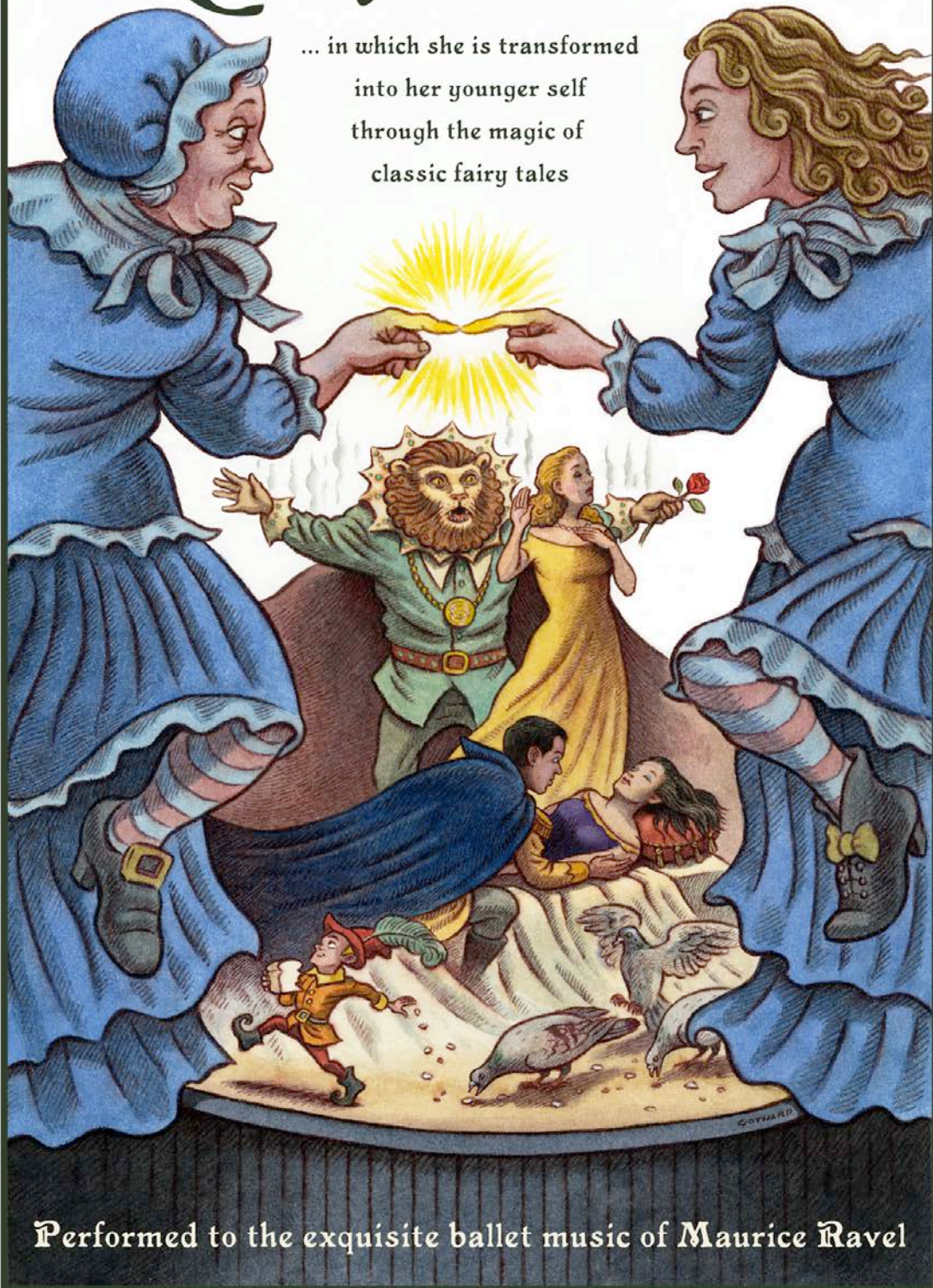


ENCHANTMENT THEATRE COMPANY'S

Mother Goose

... in which she is transformed
into her younger self
through the magic of
classic fairy tales



Performed to the exquisite ballet music of Maurice Ravel

Enchantment Theatre Company
Presents

The newest addition to their symphonic repertoire

MOTHER GOOSE

Set to “Ma Mère L'Oye” by Maurice Ravel

Available for engagements with symphony orchestras

The Story of *Mother Goose*

Inspired by the rich musical imagery of composer Maurice Ravel, we enter the world of Mother Goose as she tells the enchanting stories of her childhood. As she blends her personal history with familiar fairy tales, magic takes hold and she is transformed into each romantic heroine, experiencing youth, lost love, and new possibilities. With the prick of a finger Sleeping Beauty falls into a hundred year sleep. Beauty meets the Beast for the first time. Tom Thumb drops breadcrumbs through the forest seeking his way home. The Princess of the Pagodas defeats the evil sorcerer and saves the Serpent Prince. Through the medium of these fantastic tales, Mother Goose brings both child and adult together to share in the travail and the triumph of being human.

Set to the score of Ravel’s *Mother Goose* ballet, and in the winning tradition of Enchantment Theatre Company’s *Firebird*, *Cinderella*, and *Scheherazade*, the piece is performed onstage in front of the orchestra, incorporating the company’s signature blend of puppetry, masked actors, magic, dance, and pantomime.

Enchantment Theatre and Symphony Orchestras

There is a compelling image we often glimpse at our symphonic performances—a small child held fast on the lap of a parent or grandparent, both of them enthralled by the spectacle and the music on stage. Our work with orchestras is transformative, providing forceful evidence of the ability of great stories and great music, especially together, to connect the generations, to deepen family ties, and to build a stronger community. Mother Goose resonates across the life cycle: its impressionistic French music is exquisite and sophisticated enough to appeal to the parent or grandparent, while Enchantment’s work on stage, drawing on Ravel’s evocative musical imagery and cast of fairy tale characters, will delight and enchant any child.

Since 1985, Enchantment has worked with **more than 65 orchestras in the United States and Canada**, resulting in well-established relationships, numerous return engagements, and an excellent reputation. For booking inquiries and more information please contact Sasha Gurevich at Jonathan Wentworth Associates at 914-667-0707 or office@jwentworth.com

“[Enchantment] beautifully combine[s] theatrical elements with live symphony orchestras. This collaborative melding of the arts for the benefit of younger audience members and their accompanying adults is a valuable asset to us all.”

-Mark B. Kent, Atlanta Symphony Orchestra

Program Order

Overture of Conductor's Choice	07:00
Welcome and Introduction of Orchestra	03:00
Conductor's Choice	06:00
Excerpts from Ravel - <i>Mother Goose</i>	06:00
Ravel - <i>Mother Goose</i>	<u>33:00</u>
Approximately	55:00

The company performs during the final two sections of the program.

The program may be adjusted to run 45 minutes by adjusting length of pieces of conductor's choice.

Show Requirements

- 4 Performers, 1 Director, 1 Stage Manager = Total company of 6 persons
- 2 Double Hotel Rooms and 2 Single Hotel Rooms = Total of 4 Hotel Rooms
- 6 Return Air Tickets
- Ground Freight Transport for 4 Cases: Costumes, Props, Masks, and Puppets: Freight Quotation will be provided
- Local Transportation for 6 Company Members
- INSTRUMENTATION: 2[1.2/picc] 2[1.2/Eh] 2 2[1.2/cbn] -- 2 0 0 0 --tmp+4 --hp--cel--strings
- Complete edited *Mother Goose* score and parts available for rent—for information please contact Robert Grossman at The Philadelphia Orchestra Library
- Rehearsal: At least one 2 1/2 hour rehearsal (with break) onstage
- Technical Requirements: See Technical Rider

References

Enchantment Theatre Company has worked with the following individuals. They are very familiar with the Company's work.

Joan Katz Napoli
The Cleveland Orchestra
216-231-7348
jkatz@clevelandorchestra.com

Joseph Giunta
Des Moines Symphony Orchestra
515-280-4000
jsgiunta@aol.com

Joanne Harada
Vancouver Symphony Orchestra
604-684-9100 x223
joanne@vancouverSymphony.ca

Enchantment Theatre Company Programs for Symphony Orchestra



The Firebird



Scheherazade



The Firebird



Cinderella



Tyl Eulenspiegel



The Sorcerer's Apprentice



Scheherazade



Scheherazade